



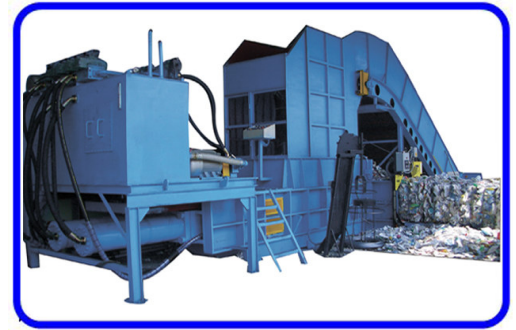
永恆環保機械有限公司 Wingbest Machinery Ltd

Automatic hydraulic Baling Press of Synthetical System

Model type : B-250

Suitable large wasted material recycle field(handling as waste paper, aluminum tin, copper wire, plastic tape, plastic bottle)

Configuration : RF-650-5S Conveyor Belt(can install 1-3 pcs)
U.S.WIRE-TIE 331 System



----This system only needs one forklift driver to achieve the following production output goal.

Baler Spec	Total Power : 138Kw (184 HP)	Main Pressing Power : 260,000kgf	M/C Weight : 31200kg
	Inlet Size : 1410W x 2550L	Inlet Capacity : 3.2 M³	Compress Weight : 550kg/M³
	Bale Size : 1100W x 800H x 1500L	Bale Weight (P.bottle) : 703kg±5%	Wire/bale : 5-7x3 wires

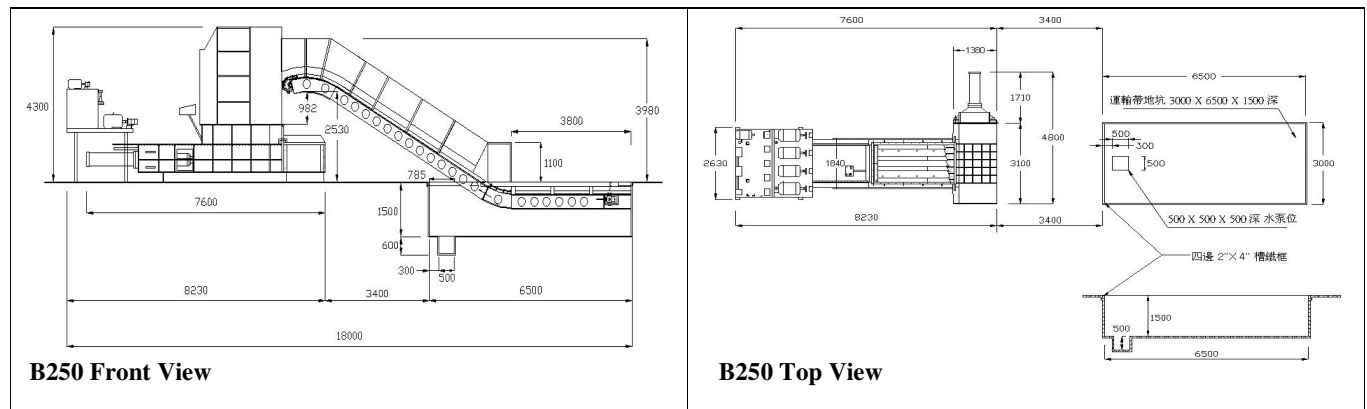
The Main function include :

- ◆ Control Panel adopts PLC computer system can be chosen between automatic & manual operation, it is simple and easy control, safety and reliability.
- ◆ The errors & recovery signal can be shown clearly on dabbing type screen, those protective functions should avoided operation mistake and increase M/C life time.
- ◆ The full-automatic / manual RF650 conveyer belt adopts high load strength belt & install anti-slip flat plate.
- ◆ In order to increase life time, the paper jam / the shear obstacle device has designed to recover automatically which can be made the production running fast & smooth.
- ◆ All kind wasted paper material can be selected suitable range for bale size & weight in compressing channel by customers.
- ◆ US wire-tie 331 system adopts high strength 101-1003-009 case. The wire length counter can be set for selecting material to reduce wire knots and save wire consumption
- ◆ With lower noise design to operate the higher turbo flow, the high flow can increase the utility conversion of main baler speed; the advantage of baler has saved energy, time, manpower, space area and rapid production.
- ◆ Can install the inlet separating system for large wasted material recycle field which bale especially deal with plastic bottle, plastic tape, aluminum tin, copper wire, newspaper, paper, magazine etc.

B-250 Bale Size : 1.1W x 0.8H x 1.5L

M/C Size : 7600 L x 4800 W x 4300 H(mm)

Output / hr Weight / Bale	22t / hr Miscellaneous Paper 773kg ± 5%	22t / hr Newspaper 773kg ± 5%	13-18t / hr Paper 686kg ± 5%	19t / hr Magazine 892kg ± 5%	8.8t / hr AL Tin 688kg ± 5%	32t / hr Copper wire 2kg ± 5%	7.1t / hr Plastic tape 671kg ± 5%	8.2-11t / hr Plastic bottle 703kg ± 5%
------------------------------	--	-------------------------------------	------------------------------------	------------------------------------	-----------------------------------	-------------------------------------	---	--



香港廠：新界元朗洪水橋田心路 17 號 A
17A Tin Sam Road, Hung Shui Kiu, Yuen Long, HK
Tel : 2445 3555 Fax : 2146 1126
Web Site : www.wingbest.com.hk

國內廠：中國東莞市虎門鎮樹田村富安工業區
電話：769-8555 5533/ 8555 4282
傳真：769-8555 6826
網址： www.wingbest.com.cn



永恆環保機械有限公司
Wingbest Machinery Ltd

Characteristic of the B-250 Baling Press :

Main Motor	40HP/4P/380V/50HZ	3PH	4 sets
Main System Motor	15HP/4P/380V/50HZ	3PH	1 set
Conveyor belt Motor	7.5HP/4P/380V/50HZ	3PH	1 set
Oil Pressure Pump	Main oil pressure blade pump (92 liter/min)		4 sets
	Auxiliary oil pressure blade pump (162 liter/min)		4 sets
Wire-Tie Machine	U.S. Wire-Tie 331		1 set
Working Pressure	215kg/cm		
Main Pressing Power	260,000kgf		
Hydraulic Cylinder	Main hydraulic cylinder	∅ 280x2850mm	2 piece
	Cross-side hydraulic cylinder	∅ 250x1650mm	1 piece
Hydraulic Parts	Yuken or Vickers hydraulic parts, etc.		
Main control component	LG- PLC and 'A-B' control component		
Cooling System	800 Liter water cooler of hydraulic travelling system		1 set
Hydraulic Oil	AW68 of petroleum		
Capacity of the fuel tank	2400 liters (please keep oil level on upper limit for normal condition)		
Max Oil Temp.	>65°C (over 65°C would be alerted by alarm signal)		
Bale Size (mm)	1100Wx 800Hx 1500L		
Bale Weight	Plastic Bottle approx. 703 kg ±5%		
Bale Speed	8.2-22 ton/hr		
Wire Diameter Spec.	2.8-3.2mm (2 times wire special treatment, 5-7 straps of bale tie)		
The Roll Of Wire Spec.	720mm external dia. × 500mm internal dia. (need to hold one roll before operation)		

香港廠：新界元朗洪水橋田心路 17 號 A

17A Tin Sam Road, Hung Shui Kiu, Yuen Long, HK

Tel : 2445 3555 Fax : 2146 1126

Web Site : www.wingbest.com.hk

國內廠：中國東莞市虎門鎮樹田村富安工業區

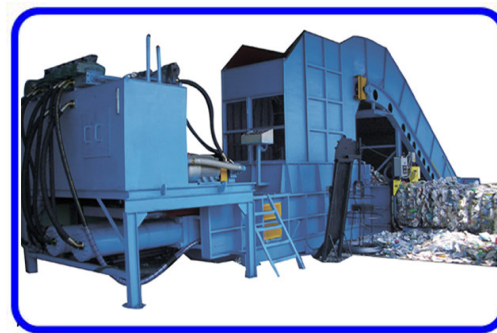
電話：769-8555 5533/ 8555 4282

傳真：769-8555 6826

網址：www.wingbest.com.cn



永恆環保機械有限公司 Wingbest Machinery Ltd



Automatic hydraulic Baling Press of Synthetical System

Model type : **B-250S**

Suitable large wasted P.E.T.material recycle field(handling as waste paper, aluminum tin, copper wire, plastic tape, plastic bottle)

Configuration : **RF-650-5S Conveyor Belt(can install 1-3 pcs)**

U.S.WIRE-TIE 331 System

-----This system only needs one forklift driver to achieve the following production output goal.

Baler Spec	Total Power : 138Kw (184 HP)	Main Pressing Power : 260,000kgf	M/C Weight : 31200kg
	Inlet Size : 1410W x 2550L	Inlet Capacity : 3.2 M ³	Compress Weight : 550kg/M ³
	Bale Size : 1100W x 800H x 1500L	Bale Weight (P.bottle) : 733kg±5%	Wire/bale : 5-7x3 wires

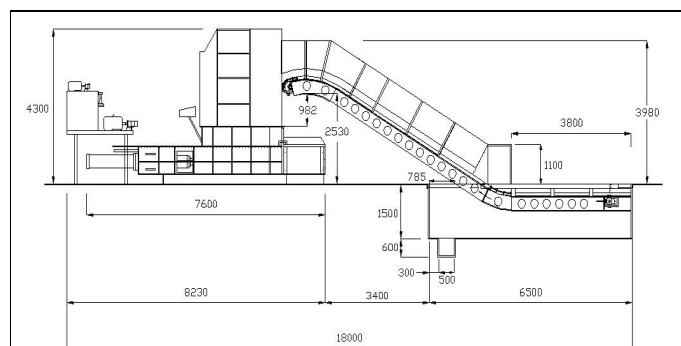
The Main function include :

- ◆ Control Panel adopts PLC computer system can be chosen between automatic & manual operation, it is simple and easy control, safety and reliability.
- ◆ The errors & recovery signal can be shown clearly on dabbing type screen, those protective functions should avoided operation mistake and increase M/C life time.
- ◆ The full-automatic / manual RF650 conveyer belt adopts high load strength belt & install anti-slip flat plate.
- ◆ In order to increase life time, the paper jam / the shear obstacle device has designed to recover automatically which can be made the production running fast & smooth.
- ◆ All kind wasted paper material can be selected suitable range for bale size & weight in compressing channel by customers.
- ◆ US wire-tie 331 system adopts high strength 101-1003-009 case. The wire length counter can be set for selecting material to reduce wire knots and save wire consumption
- ◆ With lower noise design to operate the higher turbo flow, the high flow can increase the utility conversion of main baler speed; the advantage of baler has saved energy, time, manpower, space area and rapid production.
- ◆ Can install the inlet separating system for large wasted material recycle field which bale especially deal with plastic bottle, plastic tape, aluminum tin, copper wire, newspaper, paper, magazine etc.

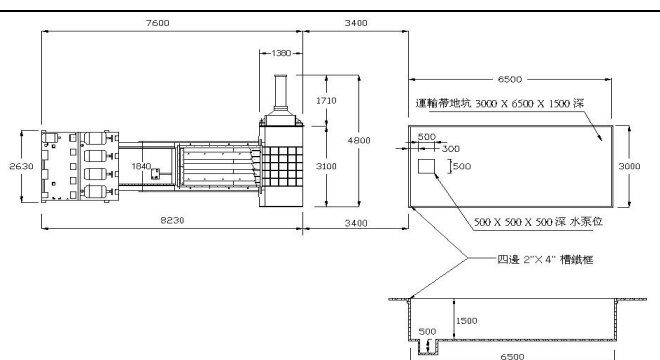
B-250S Bale Size : 1.1W x 0.8H x 1.5L

M/C Size : 7600 L x 4800 W x 4300 H(mm)

Output / hr Weight / Bale	22t / hr Miscellaneous Paper 773kg ± 5%	22t / hr Newspaper 773kg ± 5%	13-18t / hr Paper 686kg ± 5%	19t / hr Magazine 892kg ± 5%	8.8t / hr AL Tin 688kg ± 5%	32t / hr Copper wire 2kg ± 5%	7.1t / hr Plastic tape 671kg ± 5%	8.2-11t / hr Plastic bottle 703kg ± 5%
------------------------------	--	-------------------------------------	------------------------------------	------------------------------------	-----------------------------------	-------------------------------------	---	--



B250S Front View



B250S Top View

香港廠：新界元朗洪水橋田心路 17 號 A

17A Tin Sam Road, Hung Shui Kiu, Yuen Long, HK

Tel : 2445 3555 Fax : 2146 1126

Web Site : www.wingbest.com.hk

國內廠：中國東莞市虎門鎮樹田村富安工業區

電話：769-8555 5533/ 8555 4282

傳真：769-8555 6826

網址： www.wingbest.com.cn



永恆環保機械有限公司
Wingbest Machinery Ltd

Characteristic of the B-250S Baling Press :

Main Motor	40HP/4P/380V/50HZ	3PH	4 sets
Main System Motor	15HP/4P/380V/50HZ	3PH	1 set
Conveyor belt Motor	7.5HP/4P/380V/50HZ	3PH	1 set
Oil Pressure Pump	Main oil pressure blade pump (92 liter/min)		4 sets
	Auxiliary oil pressure blade pump (162 liter/min)		4 sets
Wire-Tie Machine	U.S. Wire-Tie 331		1 set
Working Pressure	215kg/cm		
Main Pressing Power	260,000kgf		
Hydraulic Cylinder	Main hydraulic cylinder	§ 280x2850mm	2 piece
	Cross-side hydraulic cylinder	§ 250x1650mm	1 piece
Hydraulic Parts	Yuken or Vickers hydraulic parts, etc.		
Main control component	LG- PLC and 'A-B' control component		
Cooling System	800 Liter water cooler of hydraulic travelling system		1 set
Hydraulic Oil	AW68 of petroleum		
Capacity of the fuel tank	2400 liters (please keep oil level on upper limit for normal condition)		
Max Oil Temp.	>65°C (over 65°C would be alerted by alarm signal)		
Bale Size (mm)	1100Wx 800Hx 1500L		
Bale Weight	Plastic Bottle approx. 733 kg±5%		
Bale Speed	8.2-22 ton/hr		
Wire Diameter Spec.	2.8-3.2mm (2 times wire special treatment, 5-7 straps of bale tie)		
The Roll Of Wire Spec.	720mm external dia. × 500mm internal dia. (need to hold one roll before operation)		

香港廠：新界元朗洪水橋田心路 17 號 A
17A Tin Sam Road, Hung Shui Kiu, Yuen Long, HK
Tel : 2445 3555 Fax : 2146 1126
Web Site : www.wingbest.com.hk

國內廠：中國東莞市虎門鎮樹田村富安工業區
電話：769-8555 5533/ 8555 4282
傳真：769-8555 6826
網址：www.wingbest.com.cn