



永恆環保機械有限公司 Wingbest Machinery Ltd



Semi-Auto Horizontal Closed-End Door Baler (Manual Tying)

Model type : MD-120/40HP

suitable narrow space for shopping centre & supermarket.
(handling for newspaper , carton , miscellaneous paper,
magazine , AL tin , plastic tape , plastic bottle)

Baler Spec	Total Power : 30Kw (40 HP)	Main Pressing Power : 110,000kgf	M/C Weight : 8950kg
	Inlet Size : 1050W x 1250L	Inlet Capacity : 1.37 M ³	Compress Weight : 480kg/M ³
	Bale Size : 1100W x 830H x 1500L	Bale Weight : 658kg±5%	Wire/bale : 5 wires

The Main function include :

- ◆ PLC Computer Control System can be chosen between automatic & manual operation, the inlet / pressing motion would be acted alternatively through the loading sensor.
- ◆ Keep automatically controlled compression ratio to set suitable bale size in advance.
- ◆ After bale wire-tying, the horizontal ram directly eject the bale away, compress door can open by the hydraulic pushing cylinders. The bale size would be solid & evenly, low wire knots to reduce wire usage.
- ◆ The best effective design to operate the high pressure flow recovery with low noise. It can save hydraulic energy with the interactive flow technology
- ◆ The interface display can be programmed to show protective signal function & prevent the human mistake / obstacle / over flow pressure alert.
- ◆ Machinery structure is very clear and easy to operate, suitable narrow space for shopping centre & supermarket.

MD-120 /40HP Bale Size : 1.1W x 0.83H x [1.5-1.6] L (M)

M/C Size : 7500L x 1670 W x 1510 H(mm)

Output / hr Weight / Bale	6t / hr Newspaper 633kg ± 5%	3.5-6t / hr Carton 595kg ± 5%	6t / hr Miscellaneous Paper 633kg ± 5%	6.5t / hr Magazine 633kg ± 5%	2.2t / hr AL Tin 571kg ± 5%	2.3t / hr Plastic tape 610kg ± 5%	5.3t / hr Plastic bottle 658kg ± 5%
------------------------------	------------------------------------	-------------------------------------	---	-------------------------------------	-----------------------------------	---	---

Characteristic of the Baling Press :

Main Motor	40HP/30kw/380V/50HZ 3PH	1 set
Oil Pressure Pump	Main oil pressure blade pump (210 liter/min) To adopt Vickers 3525V pressure pump or same product	1 set
Working Pressure	225kg/cm	
Main Pressing Power	110,000kgf	
Hydraulic Cylinder	Main hydraulic cylinder (Tube ϕ 250 x Rod ϕ 150 x Stroke 3400mm)	1 piece
	Closed -Door hydraulic cylinders (Rod ϕ 50 x Tube ϕ 70/85 x Stroke 850mm)	2 pieces
Hydraulic Oil	AW68 of petroleum	
Capacity of the fuel tank	1000 liter (please keep oil level on upper limit for normal condition)	
Max Oil Temp.	>65°C (over 65°C would be alerted by alarm signal)	
Bale Size (mm)	1100W x 830H x 1500L(mm)	
Bale Speed	5.3 ton/hr (bottle)	
Wire Diameter Spec.	2.8-3.2mm (2 times wire special treatment, 5 straps of bale tie)	
The Roll Of Wire Spec.	Through the 【Metallic wire straighten Machine】 to cut each wire about 4500mm long. All the batch of straight wires lying on the side of baler for manual wire tying.	

香港廠：新界元朗洪水橋田心路 17 號 A

17A Tin Sam Road, Hung Shui Kiu, Yuen Long, HK

Tel : 2445 3555 Fax : 2146 1126

Web Site : www.wingbest.com.hk

國內廠：中國東莞市虎門鎮樹田村富安工業區

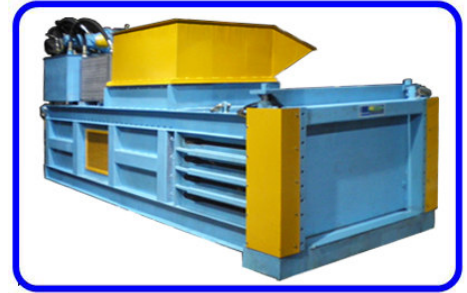
電話：769-8555 5533/ 8555 4282

傳真：769-8555 6826

網址：www.wingbest.com.cn



永恆環保機械有限公司 Wingbest Machinery Ltd



Semi-Auto Horizontal Closed-End Door Baler (Manual Tying)

Model type : **MD-120/60HP**

suitable narrow space for shopping centre & supermarket.
(handling for newspaper , carton , miscellaneous paper,
magazine , AL tin , plastic tape , plastic bottle)

Baler Spec	Total Power : 45Kw (60 HP)	Main Pressing Power : 110,000kgf	M/C Weight : 9140kg
	Inlet Size : 1050W x 1250L	Inlet Capacity : 1.37 M ³	Compress Weight : 480kg/M ³
	Bale Size : 1100W x 830H x 1500L	Bale Weight (bottle) : 658kg±5%	Wire/bale : 5 wires

The Main function include :

- ◆ PLC Computer Control System can be chosen between automatic & manual operation, the inlet / pressing motion would be acted alternatively through the loading sensor.
- ◆ Keep automatically controlled compression ratio to set suitable bale size in advance.
- ◆ After bale wire-tying, the horizontal ram directly eject the bale away, compress door can open by the hydraulic pushing cylinders. The bale size would be solid & evenly, low wire knots to reduce wire usage.
- ◆ The best effective design to operate the high pressure flow recovery with low noise. It can save hydraulic energy with the interactive flow technology
- ◆ The interface display can be programmed to show protective signal function & prevent the human mistake / obstacle / over flow pressure alert.
- ◆ Machinery structure is very clear and easy to operate, suitable narrow space for shopping centre & supermarket.

MD-120 /60HP Bale Size : 1.1W x 0.83H x [1.5~1.6] L (M)

M/C Size : 7500L x 1670 W x 1510 H(mm)

Output / hr Weight / Bale	8~11t / hr Newspaper 633kg ± 5%	5~8t / hr Carton 595kg ± 5%	8t / hr Miscellaneous Paper 633kg ± 5%	8~11t / hr Magazine 633kg ± 5%	2~2.9t / hr AL Tin 571kg ± 5%	3~5t / hr Plastic tape 610kg ± 5%	6.1t / hr Plastic bottle 658kg ± 5%
------------------------------	---------------------------------------	-----------------------------------	---	--------------------------------------	-------------------------------------	---	---

Characteristic of the Baling Press :

Main Motor	60HP/ 45kw/380V/50HZ 3PH	1 set
Oil Pressure Pump	Main oil pressure blade pump (210 liter/min) To adopt Vickers 3525V pressure pump or same product	1 set
Working Pressure	225kg/cm	
Main Pressing Power	110,000kgf	
Hydraulic Cylinder	Main hydraulic cylinder (Tube ϕ 250 x Rod ϕ 150 x Stroke 3400mm)	1 piece
	Closed -Door hydraulic cylinders (Rod ϕ 50 x Tube ϕ 70/85 x Stroke 850mm)	2 pieces
Hydraulic Oil	AW68 of petroleum	
Capacity of the fuel tank	1000 liter (please keep oil level on upper limit for normal condition)	
Max Oil Temp.	>65°C (over 65°C would be alerted by alarm signal)	
Bale Size (mm)	1100W x 830H x 1500L(mm)	
Bale Speed	6.1 ton/hr (bottle)	
Wire Diameter Spec.	2.8-3.2mm (2 times wire special treatment, 5 straps of bale tie)	
The Roll Of Wire Spec.	Through the 【Metallic wire straighten Machine】 to cut each wire about 4500mm long. All the batch of straight wires lying on the side of baler for manual wire tying.	

香港廠：新界元朗洪水橋田心路 17 號 A

17A Tin Sam Road, Hung Shui Kiu, Yuen Long, HK

Tel : 2445 3555 Fax : 2146 1126

Web Site : www.wingbest.com.hk

國內廠：中國東莞市虎門鎮樹田村富安工業區

電話：769-8555 5533/ 8555 4282

傳真：769-8555 6826

網址：www.wingbest.com.cn